



Faculty of Civil and Environmental Engineering

ASIAN INSTITUTE OF TECHNOLOGY



AIT

- Founded in 1959
- 330 acres campus. Self-contained, green, safe community
- An international environment, language of learning in English
- Home to 1,600+ students and 600+ faculty & staff from 48+ countries

Mission

“To develop highly qualified and committed professionals who will play a leading role in the sustainable development of the region and its integration into the global economy”.



AIT

FACTS & FIGURES

1,500+

Postgraduate
Students

6
FACULTY

- Faculty of Civil and Environmental Engineering
- Faculty of Advanced Science and Technology
- Faculty of Climate Change and Sustainability
- Faculty of Food, Agriculture and Natural Resources
- Faculty of Public Policy and Sustainable Development
- School of Management

27,000+

Alumni



16 Professors
World's Top 2% Scientists

ranked by the
Stanford University

160+

World-class
Faculty

400+

Partners

190+
Ongoing Research
Projects

15
Centers

AIT'S 6 FACULTY



Faculty of Public Policy and Sustainable Development



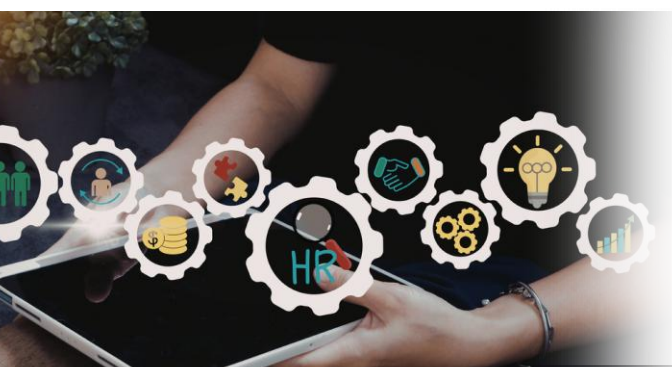
Faculty of Climate Change and Sustainability



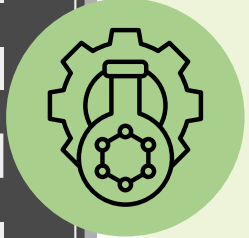
Faculty of Food, Agriculture and Natural Resources



Faculty of Civil and Environmental Engineering



School of Management



Faculty of Advanced Science and Technology





FACULTY OF CIVIL AND ENVIRONMENTAL ENGINEERING

AIT FCEE



CEIM

Construction, Engineering and Infrastructure Management



STE

Structural Engineering



EEM

Environmental Engineering and Management



TRE

Transportation Engineering



GTE

Geotechnical and Earth Resources Engineering



WEM

Water Engineering and Management

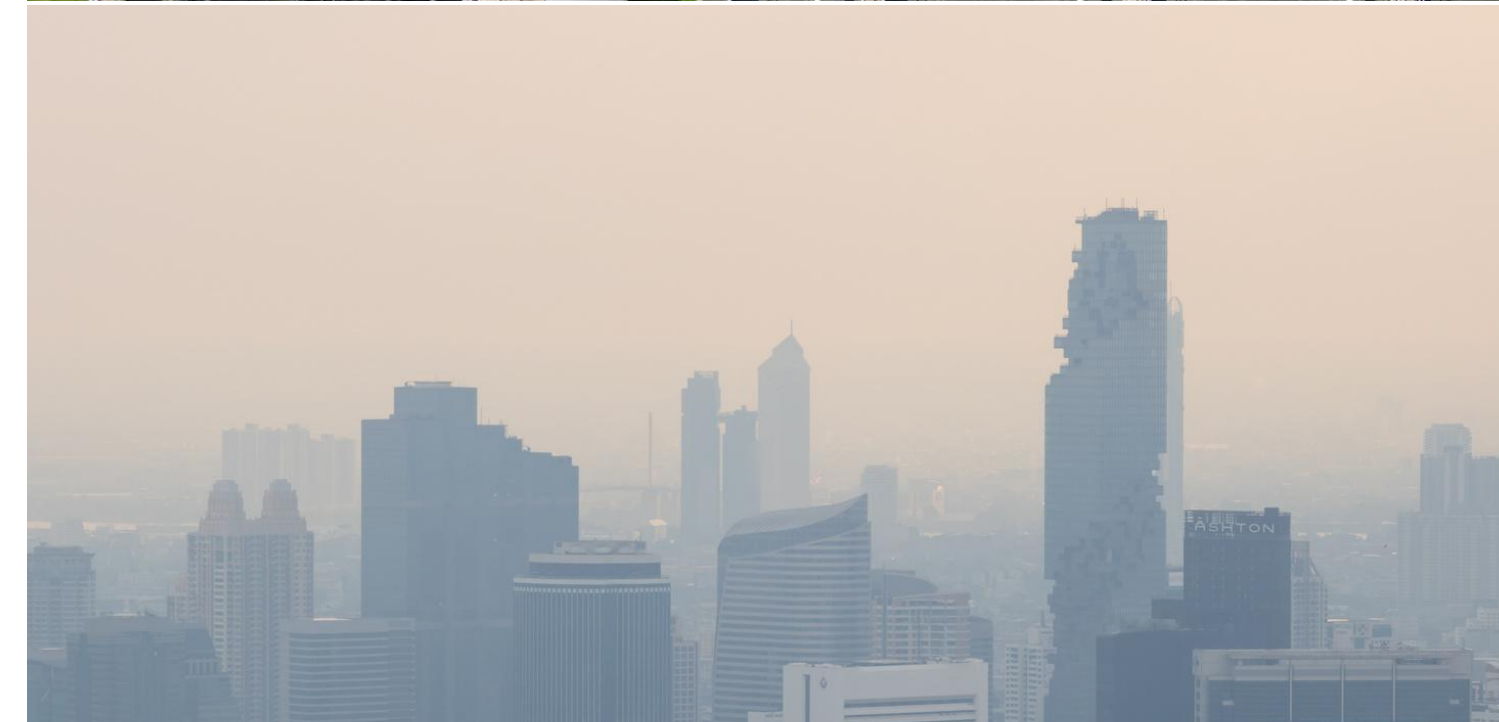
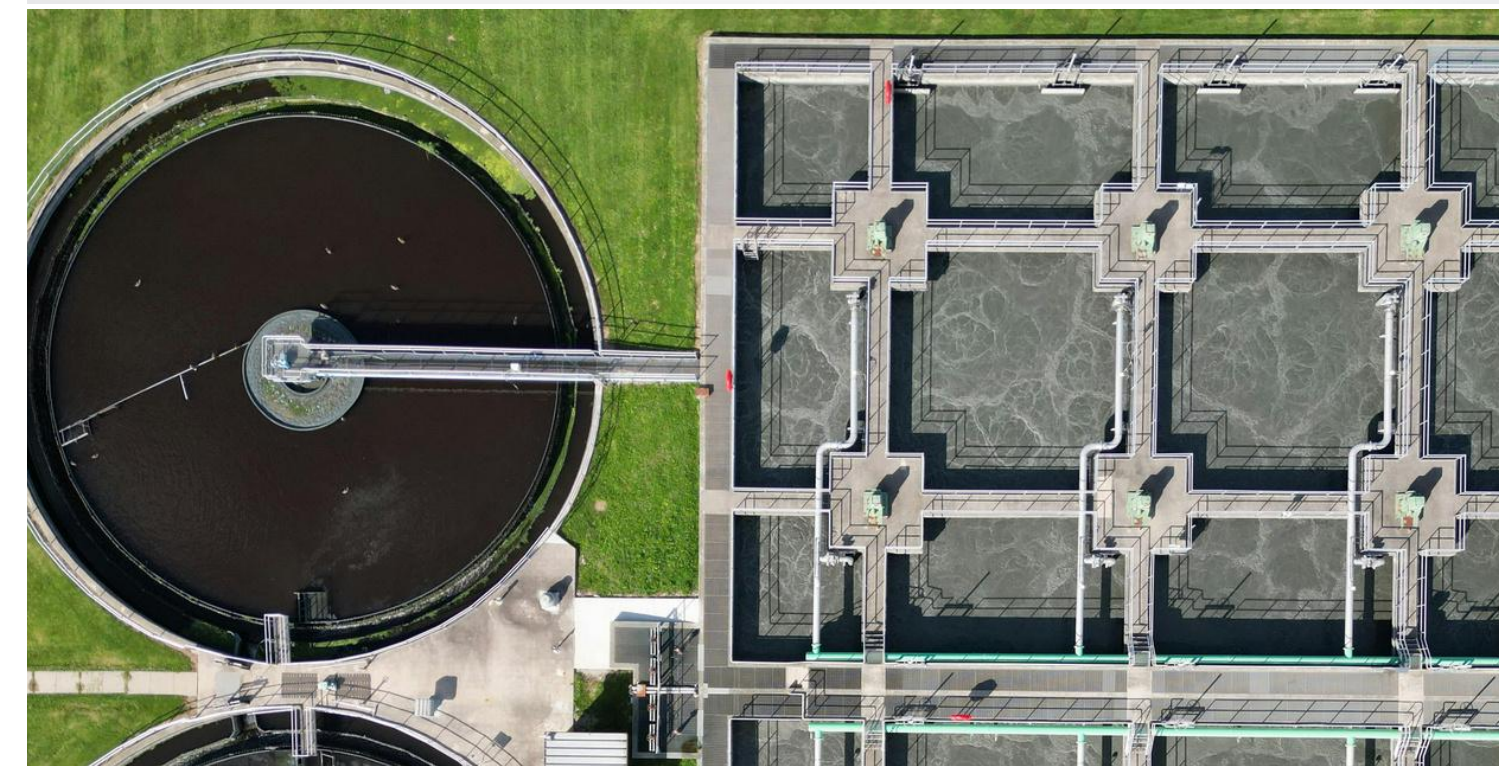
Environmental Engineering and Management Program (EEM)

Objective:

- To develop highly qualified and committed professionals who will play a leading role in the sustainable development of the region and its integration into the global economy

Focus Areas:

- PM2.5 and air pollution management
- Short-lived climate pollutants
- Greenhouse gas mitigation through microbial solutions
- Solid and hazardous waste management (including plastics)
- Inclusive sanitation
- Life cycle assessment
- Water pollution control
- Water and wastewater treatment
- Resource recovery and circular economy



EEM RESEARCH LABS



» Main Laboratory

- Individual workspace
- Laboratory analysis works
- Equip with all the basic and advanced equipment



» Ambient Laboratory

- Individual workspace
- Experimental setup operation
- Equip with all the necessary facilities



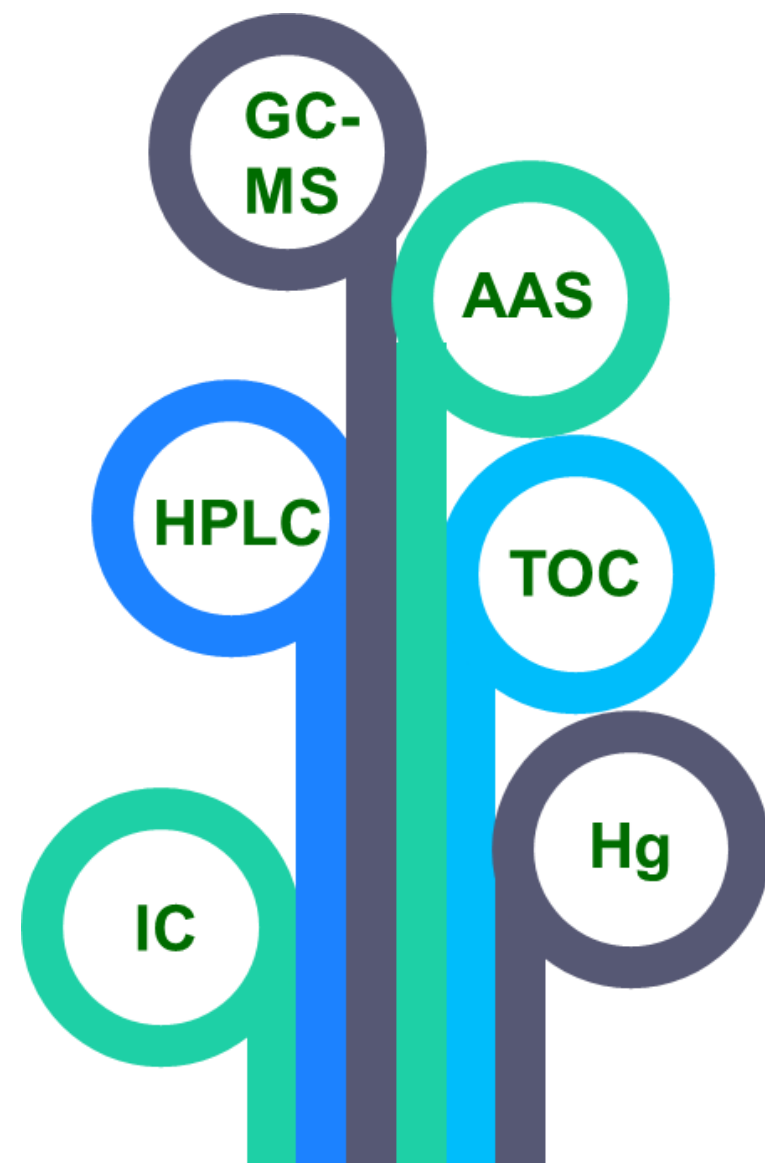
Research Station

- 7000 m² space
- Pilot scale research experiments
- Outdoor/ Real case simulations
- Sponsored research projects

EEM RESEARCH LABS

IDEA Laboratory

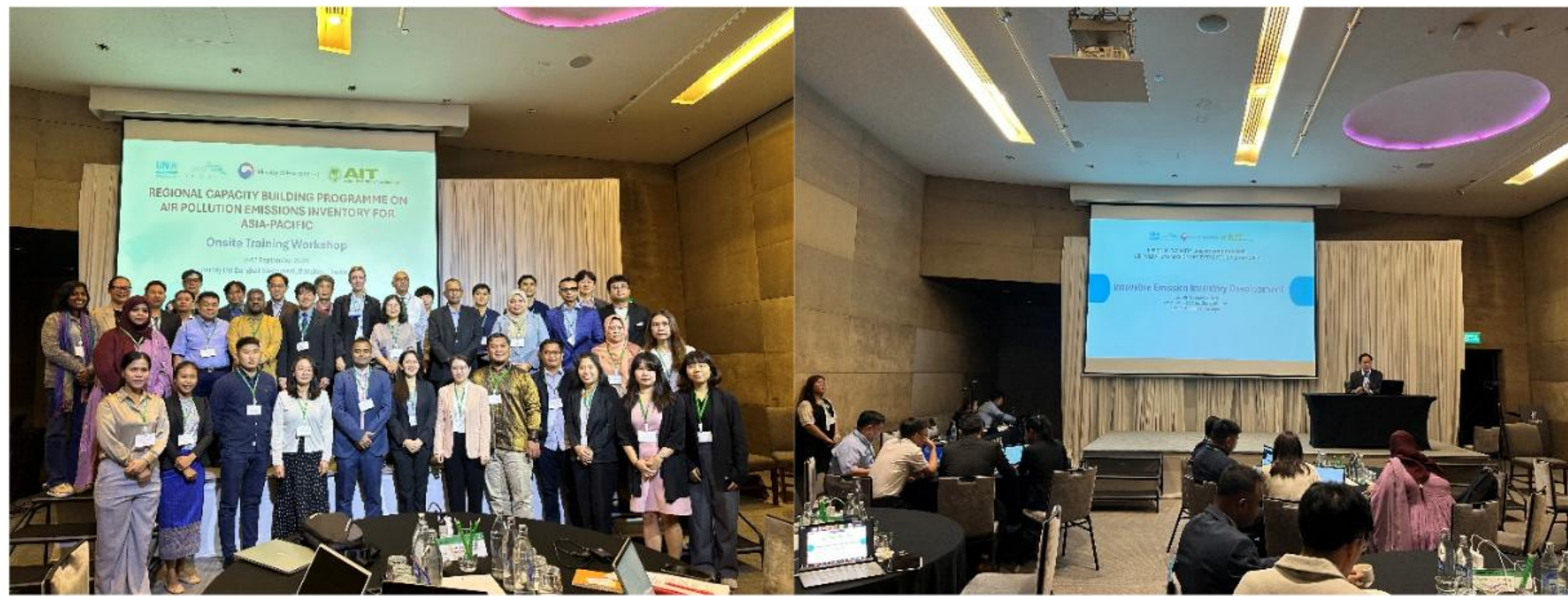
Advanced Equipment Facilities



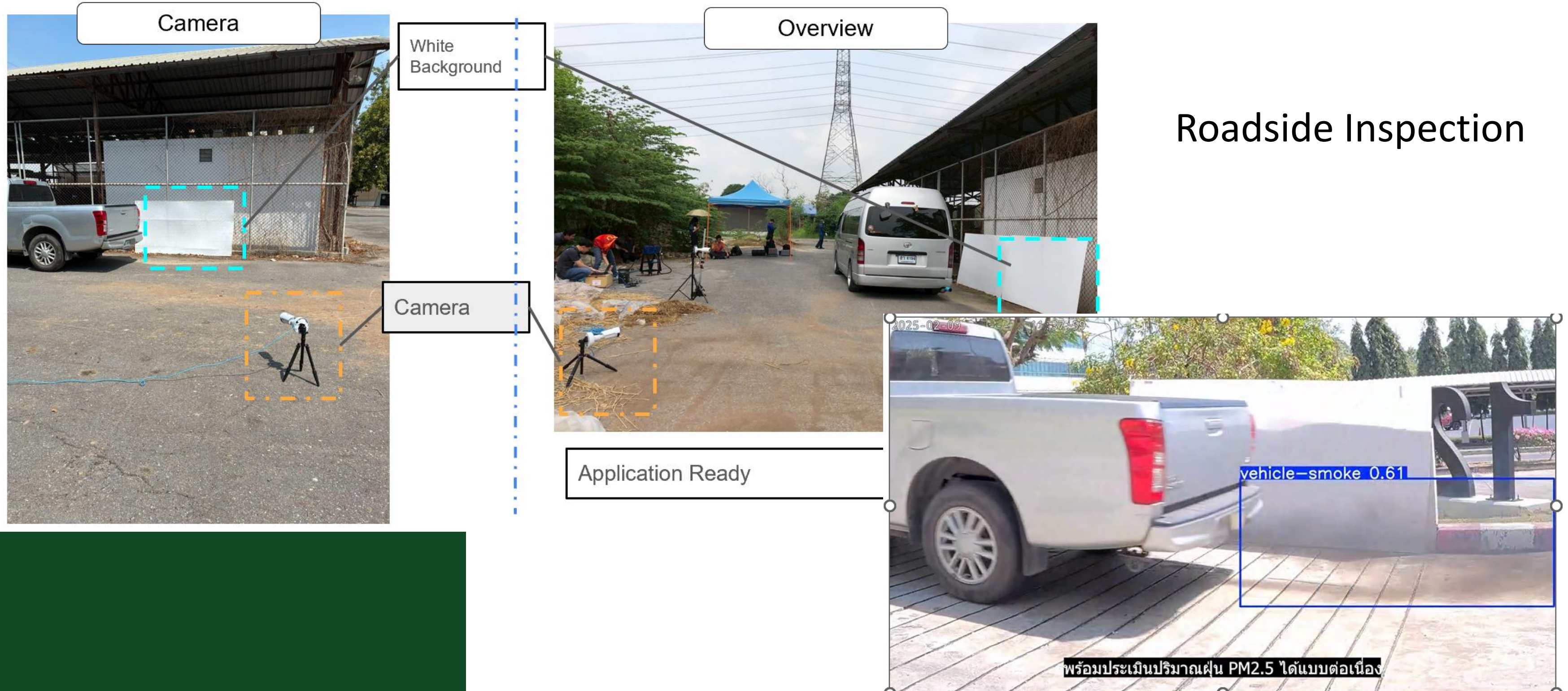
AIT FCEE

CAPACITY BUILDING

AIT FCEE



Camera and PC setup



Roadside Inspection

Application Ready

พร้อมประเมินปริมาณฝุ่น PM2.5 ได้แบบต่อเนื่อง

LMEW Platform



Website:
<https://lowermekongemissionwatch.com/map>

- 1 Overview Section:**
 - Filter emissions by country, province, land-use, pollutant type, and time series
 - View emissions in 2D or 3D
 - Interactive heatmaps, grid layers, and volume layers
- 2 Dashboard Section:**
 - Summary visuals by land use and pollutant
 - Emission trends over time
 - Downloadable raw data
- 3 Historical Data Section:**
 - Emission data from 2018 onward
 - Year-by-year comparison
- 4 Methodology Section:**
 - Detailed explanation of data sources, satellite validation, and AI-based land categorization



AIT
Asian Institute of Technology

Thank you very much!

*Contact: Ekbordin Winijkul, PhD
ekbordinw@ait.asia*